

26 February 2021

Our Ref: 10157701

**STREET IMPROVEMENTS – INTERSECTION OF CHALMERS STREET AND BEDFORD STREET, SURRY HILLS**

We will soon start work to improve **the intersection of Chalmers Street and Bedford Street, Surry Hills**. These works will increase pedestrian, bike and public transport access while improving safety and greening our streets.

**What work is being done?**

- Traffic signalised intersection across Chalmers Street
- Continuous footpath treatment across Bedford Street
- Concrete access ramps
- Stormwater pit and pipes
- New concrete footpath
- Kerb and gutter
- Road resurfacing
- Tactile installation
- Linemarking and signage

**See overleaf for concept.****When will work start?**

The City's contractor, Sydney Civil, will start work in about **two weeks**. Work will be carried out during the **day** between **7:30am and 5:30pm Monday to Friday, 7:30am and 3:30pm Saturday** and during the **night** between **8pm and 5am Monday to Thursday**. The work is expected to take about **three months** to complete, weather permitting.

Night works will be staged throughout the project and a letter notification will be distributed to the community of exact dates prior to these works.

**Will there be any disruption?**

We will take steps to minimise any impact on you. However, there will be some machinery noise, temporary restrictions to vehicle parking and alternative pedestrian access.

Works requiring noisy machinery will be limited to before 10.30pm.

In the event of wet weather, work will commence the following day. If unsuitable weather continues, we will notify you of the change in scheduling.

Thank you for your cooperation while we carry out these important works.

**Find out more**

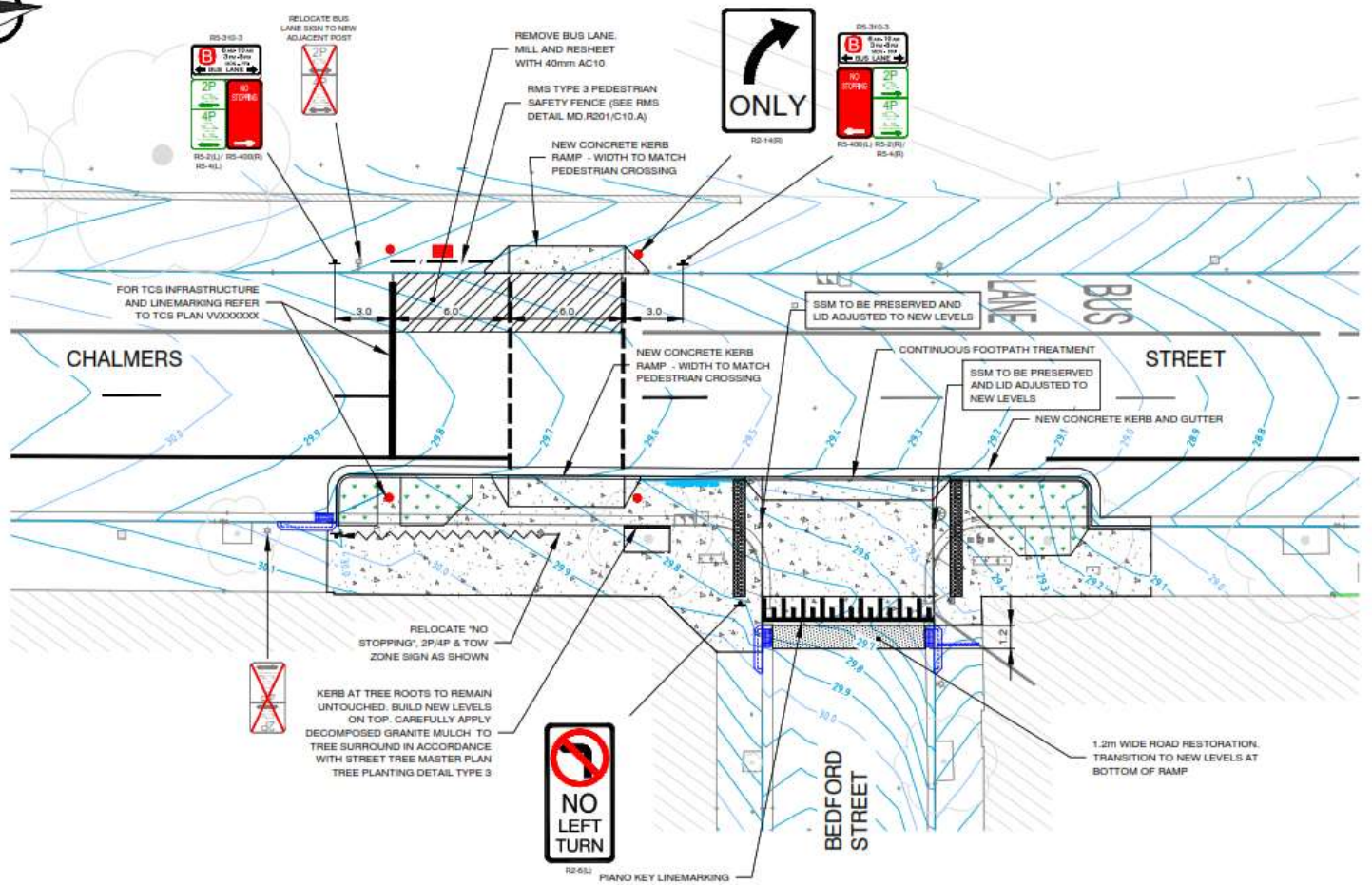
For more information, please contact Sydney Civil community relations team on 1300 997 858 or email [community@sydneycivil.com](mailto:community@sydneycivil.com)

Yours sincerely



Tony Ly  
Project Manager

Green, Global, Connected.



### LEGEND

-  CONCRETE PAVEMENT
-  ASPHALT ROAD RESURFACE
-  WARNING TACTILES TO AS1428
-  PLANTED GARDEN - PLANTING BY OTHERS
-  NEW SIGN TO BE INSTALLED
-  EXISTING SIGN TO BE REMOVED