

George Street South Pedestrianisation Project, Sydney



PROJECT UPDATE – APRIL 2022

Works Completed

- The section between Hay Street and Rawson Place is now open on the east side, and between Hay Street and Ultimo Road on the west side.

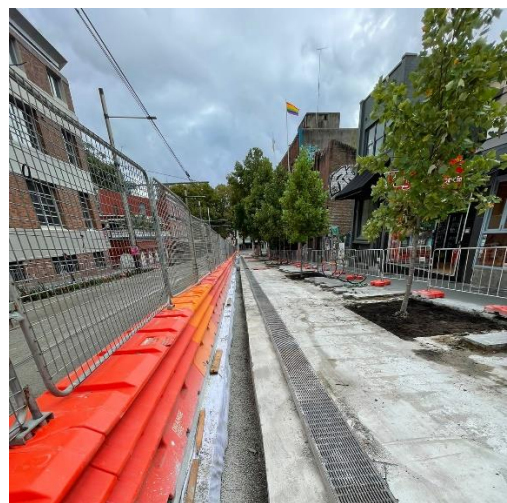
Current and Upcoming Works

- Works continue between Ultimo Road and Rawson Place on the west side, including the roadway, kerb stone and paving.
- Works continue in Devonshire Street between Chalmers Street and Elizabeth Street, including excavation, concreting, paving and landscaping.
- Works continue in Hay Street between George Street and Sussex Street. Paving will be completed over the next few weeks.
- Liverpool Street cycleway kerb at the George Street and Parker St raised threshold works at Hay St.
- Works to start on Ultimo Road between George Street and Thomas Street (including works on Thomas Street and Hay Street). These will include electrical, stormwater, kerb, road and footpath upgrade.

Working Hours

- Monday to Saturday 7am to 9pm.
- Night works and detour will be implemented for George Street works between Ultimo Road and Rawson Place. Refer notice dated 21 Mar 2022.
- Night works for Devonshire St intersection with Chalmers & Elizabeth St as per notice dated 30/03/22.
- Night works and detour required for Parker Street due to restrictions imposed by the Light Rail Operator. Separate notes for the above have been distributed.

For more information on the project, please go to the City of Sydney web page: www.city.sydney/George-street



Landscaping and paving works – Devonshire Street (Between Elizabeth St and Chalmers St)

Contact us

For construction work enquiries, please contact:
Sydney Civil, Community Liaison Officer, 0424 171 852



Scan the above QR code to access Sydney Civil's information webpage for additional project details, latest updates, or if you would like to contact us.

<https://community.sydneycivil.com/george-street-south-pedestrianisation>

We will take steps to minimise impacts on local business owners and residents, however please note there may be machinery noise as well as temporary disruptions to local and pedestrian traffic. Access to all properties will be maintained at all times.