

# George Street South Pedestrianisation Project, Sydney



## PROJECT UPDATE – MAY 2022

### Works Completed

- George Street between Hay Street and Rawson Place is complete and open for public's free movement across rail tracks.
- The section on Hay Street between George Street and Sussex Street is also now complete and open.

### Current and Upcoming Works

- Works continue in Devonshire Street between Chalmers Street and Elizabeth Street, including paving, landscaping and traffic signal works.
- Liverpool Street cycleway kerb at George Street, and Parker Street raised threshold works at Hay Street.
- Works on Ultimo Road between George Street and Thomas Street and works at the intersection of Thomas Street and Hay Street have commenced. These include electrical, stormwater, kerb, road and footpath upgrade.

### Working Hours

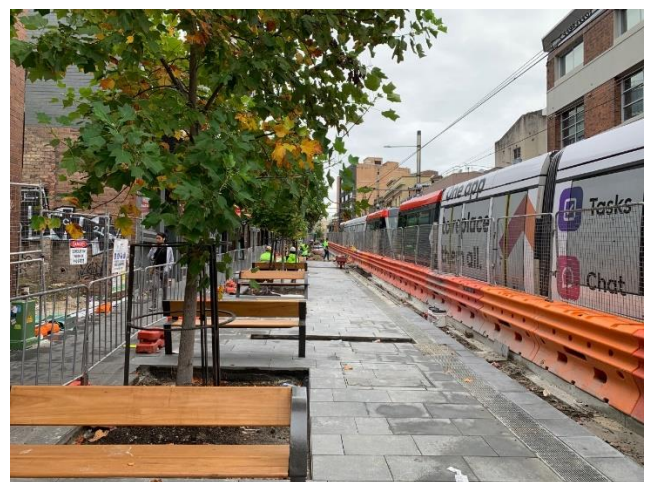
- Monday to Saturday 7am to 9pm.

The following night works will be required this month:

- Traffic signals works at Devonshire Street.
- Traffic signals works at the George Street/Hay Street/Sussex Street intersection.
- Works at Liverpool Street to complete kerb and road works.

Our Community Liaison Officer will contact you prior to these night works and separate notices will be distributed.

For more information on the project, please go to the City of Sydney web page: [www.city.sydney/George-street](http://www.city.sydney/George-street)



*Landscaping, street furniture and paving works progress – Devonshire Street (Between Elizabeth St and Chalmers St)*

### Contact us

For construction work enquiries, please contact:  
Sydney Civil, Community Liaison Officer, 0449 807171



Scan the above QR code to access Sydney Civil's information webpage for additional project details, latest updates, or if you would like to contact us.

<https://community.sydneycivil.com/george-street-south-pedestrianisation>

We will take steps to minimise impacts on local business owners and residents, however please note there may be machinery noise as well as temporary disruptions to local and pedestrian traffic. Access to all properties will be maintained at all times.