

George Street South Pedestrianisation Project, Sydney



PROJECT UPDATE – AUGUST 2022

Works Completed

- Footpath areas are now open, along George Street (western side, from Rawson Place to Pitt Street, excluding a small section adjacent to the intersection with Valentine Street).
- Footpath areas are now open on Ultimo Road (north and south sides).
- Footpath and driveway areas on Thomas Street and Ultimo Road are also now open. Temporary asphalt to driveway for paving completion at a later stage.

Current and Upcoming Works

- Works on George Street east side (between Rawson Place and Pitt Street) involving excavation, drainage, electrical, concreting, and paving activities.
- Completing kerb ramp extension at Hay Street and Sussex Street (south side of Hay Street).
- Works on the northeast corner of Elizabeth Street and Devonshire Street, Surry Hills.
- Kerb, utilities, and footpath works at the intersection of Ultimo Road and Thomas Street (City Market side).
- Works will start on Valentine Street towards the end of this month. Closures will be required.
- Works on Ultimo Road and George Street at Rawson Place will require night works and detours.

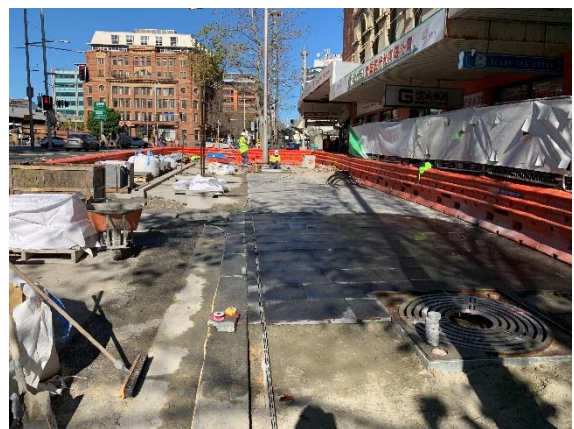
Working Hours

- Monday to Saturday 7am to 9pm.

The following night works will be required this month:

- Infrastructure works along George Street at Rawson Place and asphaltting works at Ultimo Road.
- Further information on the above night works and detours will be provided separately.

For more information on the project, please go to the



Paving progress on George Street (West side - between Valentine Street and Pitt Street)

Contact us

For construction work enquiries, please contact:
Sydney Civil, Community Liaison Officer, 0424 171 852



Scan the above QR code to access Sydney Civil's information webpage for additional project details, latest updates, or if you would like to contact us.

<https://community.sydneycivil.com/george-street-south-pedestrianisation>

We will take steps to minimise impacts on local business owners and residents, however, please note there may be machinery noise as well as temporary disruptions to local and pedestrian traffic. Access to all properties will be always maintained.

City of Sydney web page: www.city.sydney/George-street